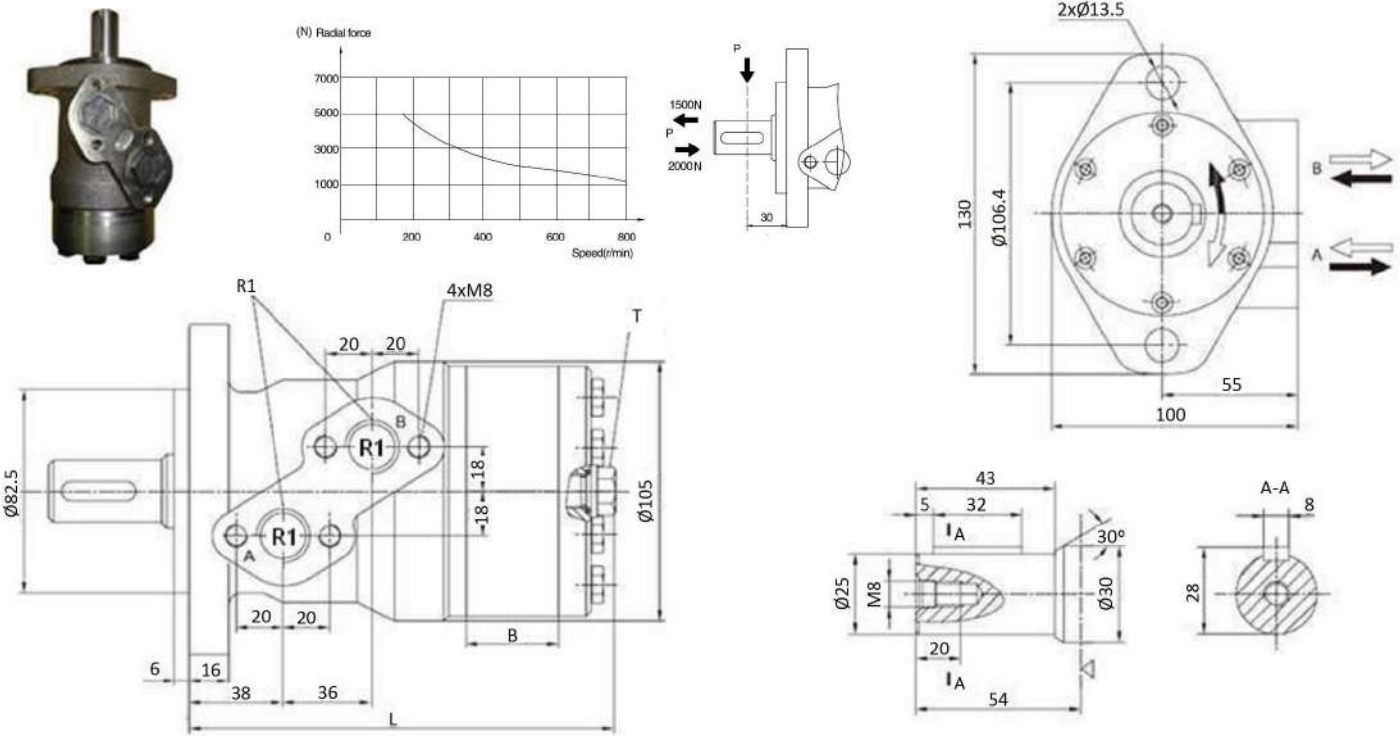


MOMR type motor



Shaft: cylindrical shaft, diameter 25 mm

Max. flow intern.: MOMR50 =50 (l/min); Others=75 (l/min)

T: drainage line, thread 1/4"

(Power in kW)

(Torque in daN.m)

Part n°	R1	Max. flow (l/min)	Max. press. cont.	Max. press. intern.	Max. Peak press.	cm ³ / rev	R.P.M. cont.	R.P.M. int.	Max. torque cont.	Max. torque peak	Max. power cont.	Max. flow cont.	B	L
HMR-050-C25/AG	1/2" BSP	40	140	175	200	50	770	970	93	135	7	40	9	139
HMR-080-C25/AG	1/2" BSP	60	140	175	200	80	745	940	152	216	10	60	14	144
HMR-100-C25/AG	1/2" BSP	60	140	175	200	100	600	750	194	270	10	60	17,5	148
HMR-125-C25/AG	1/2" BSP	60	140	175	200	125	470	600	237	338	10	60	22	152
HMR-160-C25/AG	1/2" BSP	60	140	175	200	160	370	470	310	433	10	60	28	158
HMR-200-C25/AG	1/2" BSP	60	140	175	200	200	300	370	369	509	8	60	35	165
HMR-250-C25/AG	1/2" BSP	60	110	140	160	250	240	300	380	540	6	60	44	174
HMR-315-C25/AG	1/2" BSP	60	90	110	130	315	190	240	380	540	5	60	56	186
HMR-400-C25/AG	1/2" BSP	60	70	90	110	400	150	190	380	540	4	60	70	200

*** Review attached PDF***

*Intermittent operation rating applies to 6 seconds of every minute.

*Peak load rating applies to 0.6 seconds of every minute.