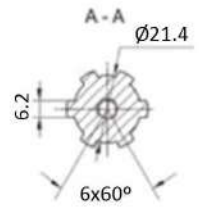
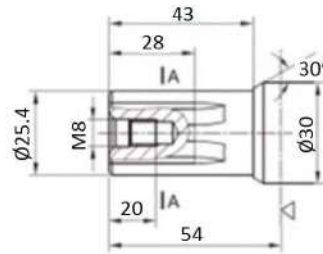
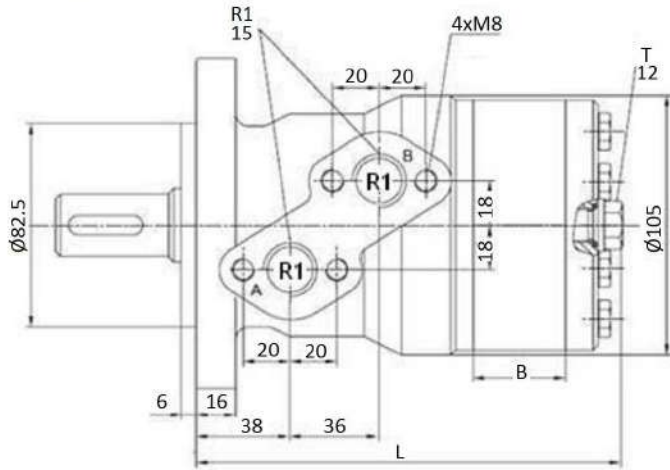
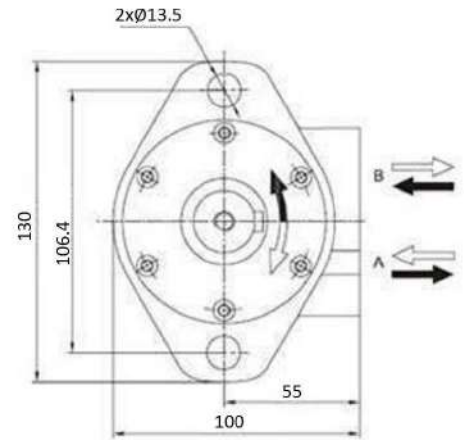
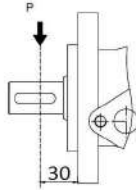
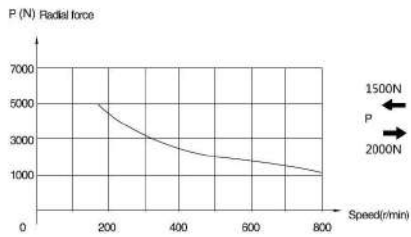


**MOMR type motor with splined shaft**



**Shaft:** splined shaft, diameter 25,4 mm  
**Max.flow interm:** MOMR50EST= 50 l/min, Otros 75 l/min  
**T:** drainage line, thread 1/4"  
**(Power in kW)**  
**(Torque in DaN.m)**

Part nº	R1	Max. flow (l/min)	Max. press. cont.	Max. Peak press.	cm <sup>3</sup> / rev	R.P.M. cont.	R.P.M. int.	Max. torque cont.	Max. torque peak	Max. power cont.	Max. flow cont.	B	L
<b>HMR-100-ES/AG</b>	1/2" BSP	60	160	210	100	600	750	24,2	32,1	12	60	17,5	148
<b>HMR-160-ES/AG</b>	1/2" BSP	60	160	210	160	370	470	38,9	45,8	11,4	60	28	158
<b>HMR-200-ES/AG</b>	1/2" BSP	60	135	210	200	300	370	38,5	56	9	60	35	165
<b>HMR-250-ES/AG</b>	1/2" BSP	60	105	200	250	240	300	38,8	65,5	6,4	60	44	174
<b>HMR-315-ES/AG</b>	1/2" BSP	60	85	175	315	190	240	38,5	83	6	60	56	186

\*\*\* Review attached PDF\*\*\*  
 \*Intermittent operation rating applies to 6 seconds of every minute.  
 \*Peak load rating applies to 0.6 seconds of every minute.