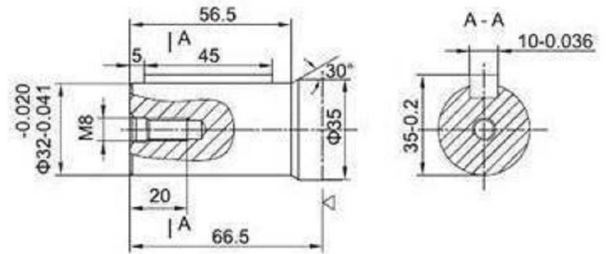
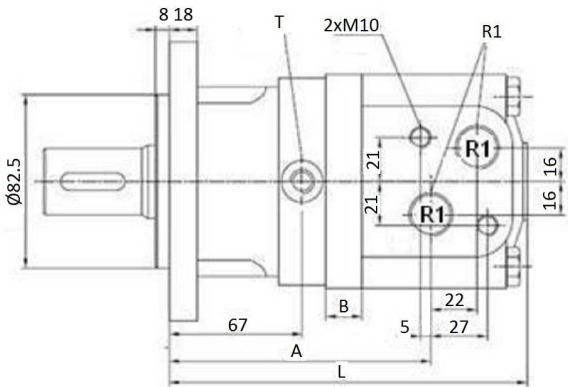
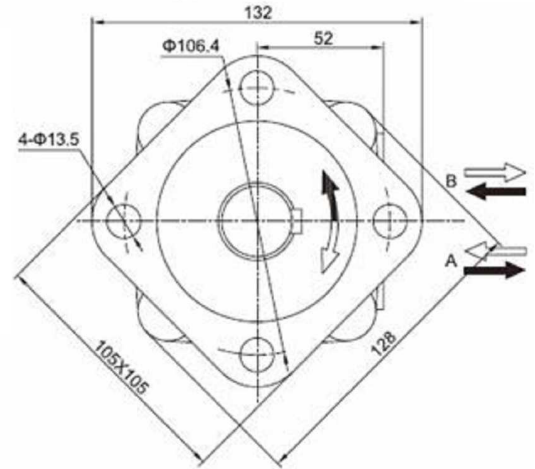
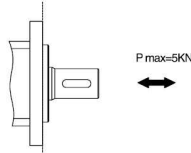
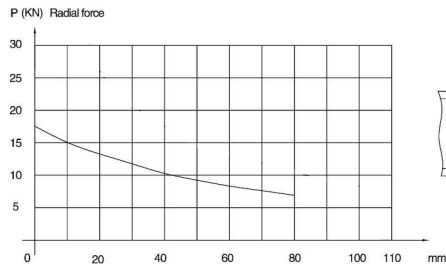


MOMS type motor



Shaft: cylindrical shaft, diameter 32 mm

Max. flow interm.: MOMS80 =80 (l/min); Others=90 (l/min)

T: drainage line, thread 1/4"

(Power in kW)

(Torque in daN.m)

Part n°	R1	Max. flow (l/min)	Max. press. cont.	Max. press. interm.	Max. Peak press.	cm ³ / rev	R.P.M. cont.	R.P.M. int.	Max. torque cont.	Max. torque peak	Max. power cont.	A	B	L
HMS-80-C32/AG	1/2" BSP	65	175	210	225	80	805	1.000	19,8	26	16,4	124	11	167
HMS-100-C32/AG	1/2" BSP	75	175	210	225	100	746	900	24,4	32,2	19,4	127	14,5	170
HMS-160-C32/AG	1/2" BSP	75	160	210	225	160	465	560	34	48,5	12	138	25	181
HMS-200-C32/AG	1/2" BSP	75	150	180	225	200	373	447	39,5	64,8	14	145	32	188
HMS-315-C32/AG	1/2" BSP	75	120	140	185	315	236	290	54,1	84	11,5	166	53	208

*** Review attached PDF***

*Intermittent operation rating applies to 6 seconds of every minute.

*Peak load rating applies to 0.6 seconds of every minute.

*Peak load rating applies to 0.6 seconds of every minute.