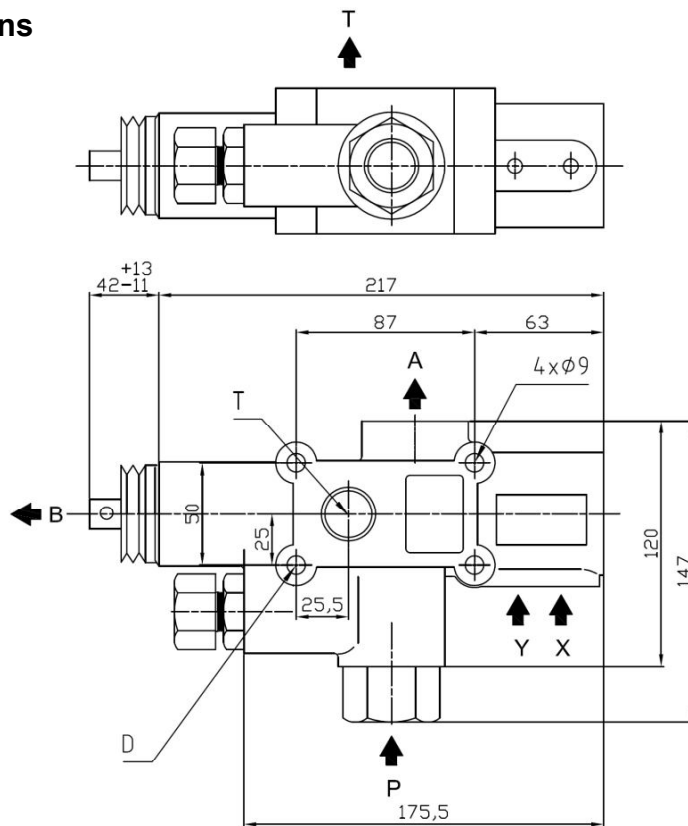


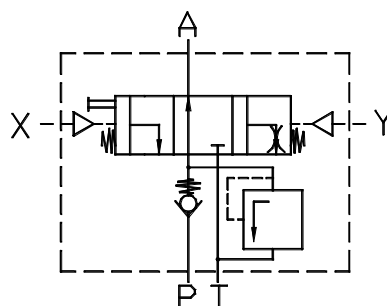


<b>Tipping Valve</b>		Ref. VVLR13001
<b>VV</b>	Close Circuit 130 L	

### Main Dimensions



- A – Outlet 1" BSP
- B – Pull Stroke end
- P – Pump 1" BSP
- T – Tank 1" BSP
- X – Rapid descent 1/8" BSP
- Y – Slow descent 1/8" BSP



(Dimensions in mm)

### Main Data

<b>Maximum pressure (Bar)</b>	<b>350</b>
<b>Operating pressure (Bar)</b>	<b>up to 300</b>
<b>Flow rate (l/min)</b>	<b>130</b>
<b>Weight (kg)</b>	<b>5.2</b>

#### Notes:

- ✓ This tipping valve can be used in progressive descent with our air commands ABCD.
- ✓ Tighten the tipping valve with only three bolts. Do not use the "D" hole. Screw the three bolts with a max. tightening torque of 20 N.m (soft tightening).

ABER is constantly engaged in improving its products and, therefore, reserves itself the right to modify without any further notice the characteristics shown

