



SCF031/SCF034/SCF032 series Flexible cable remote control joystick

- Mechanical safety lock
- Ergonomic handles with push-buttons available
- Single or dual spool operation for a 2 section directional valve
- High efficiency
- Body, rubber boot and knob made in self-extinguishing and recyclable plastic polymer

Working conditions

Max. permissible torque at the lever	30 Nm - 22.1 lbf ^t
Features of the cable	see CD cable on page 19
Working temperature	from -20 to 80 °C - from -4°F to 176°F
Max. recommended length	4000 mm - 157.48 in
Average efficiency	70%

NOTE: the features are referred to remote control with flexible cables

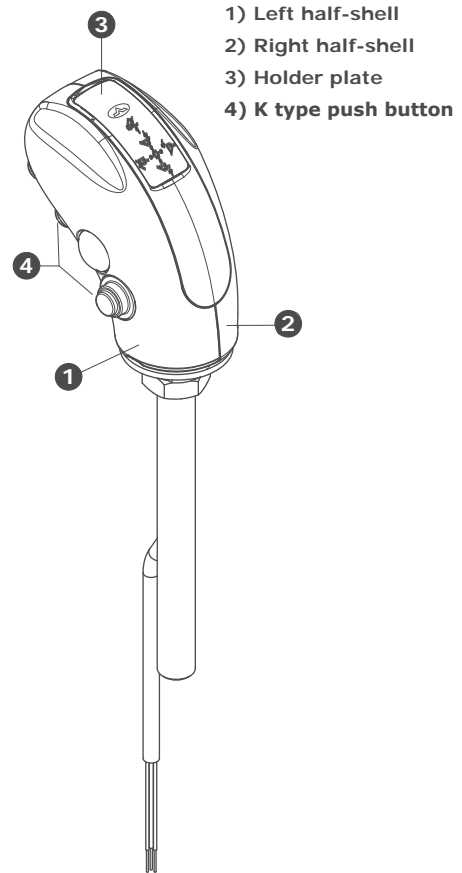
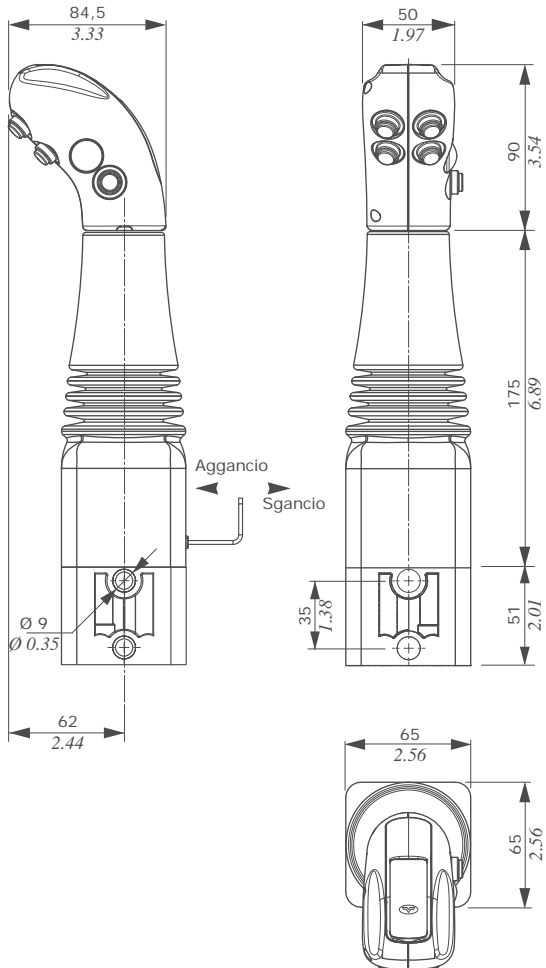
Features

Push-buttons

Current/voltage	6 A / 125 VAC
	3 A / 250 VAC
	3 A / 30 VDC
Mechanical life	10 ⁵ n ^o of operation
Electric life	25x10 ³ n ^o of operation
Operating force	9.3 N - 2.09 lbf
Weather protection	IP 64

Dimensions and handles

Configuration with multi-micro ergonomic AMH type handle and dedicated bellow.



Description example and ordering codes

Description example

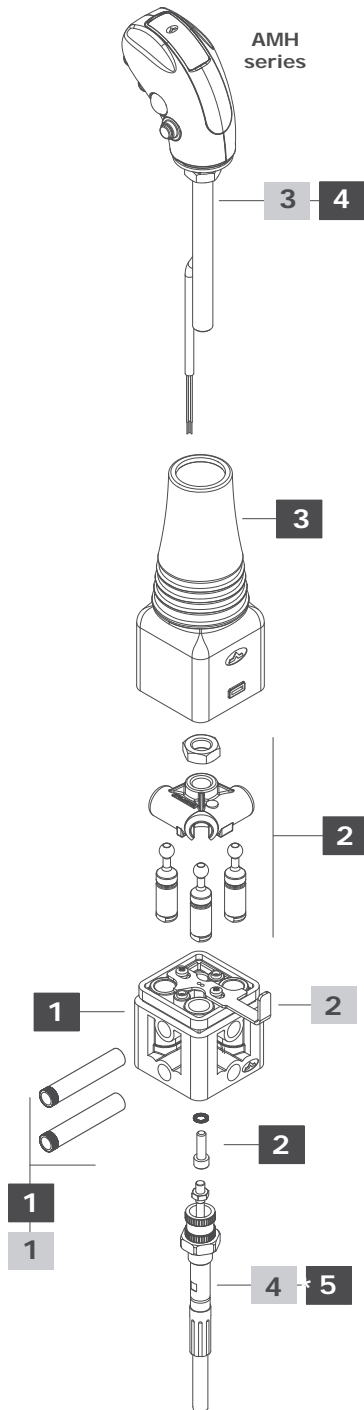
SCF034 / 0 2 AMHK0500A4-4(TAP)-5N5055-6N5055-7N5055-8N5055-9N5055-(E1) + CD1500x2

1
2
3
4

Working section parts ordering codes

SCF034/02 AMHK0500A4-4(TAP)-5N5055-6N5055-7N5055-8N5055-9N5055-(E1) + CD1500x2

1
4
5



Description composition

1 Body mounting

See page 15

2 Mechanical lock

See page 15

3 Handles

For description see #4 of "Ordering codes".

4 Flexible cable

TYPE	DESCRIPTION
CD1500	CD cable with lenght 1500 mm - 59 in
Note: for cables and connection kit see pages 20 and 21	

Ordering codes

1 Body kit

See page 15

2 Control kit

See page 15

3 Bellow

TYPE	CODE	DESCRIPTION
SCF034	3SOF204176	Bellows

4 Handles

Available AMH handles with custom length. Example:
AMH series handle
 TYPE: AMHK0500A4-4(TAP)-5N5055-6N5055-7N5055-8N5055-9N5055-(E1)
 CODE: 2IM3000008 DESCRIPTION: With 4 front push-button and 1 side push-button
 TYPE: AMHMO300C4-1RB1150-6VB1150-8VB1150-(E3)
 CODE: 2IM3000018 DESCRIPTION: With 2 front push-button and 1 side push-button and symbols according to UNI EN 12525
 Note: for further configuration contact Sales Department

5 Flexible cable

For cables and connection kit see pages 20 and 21.



Flexible cables

- High resistance and low actioning efforts
- Weatherproof resistance

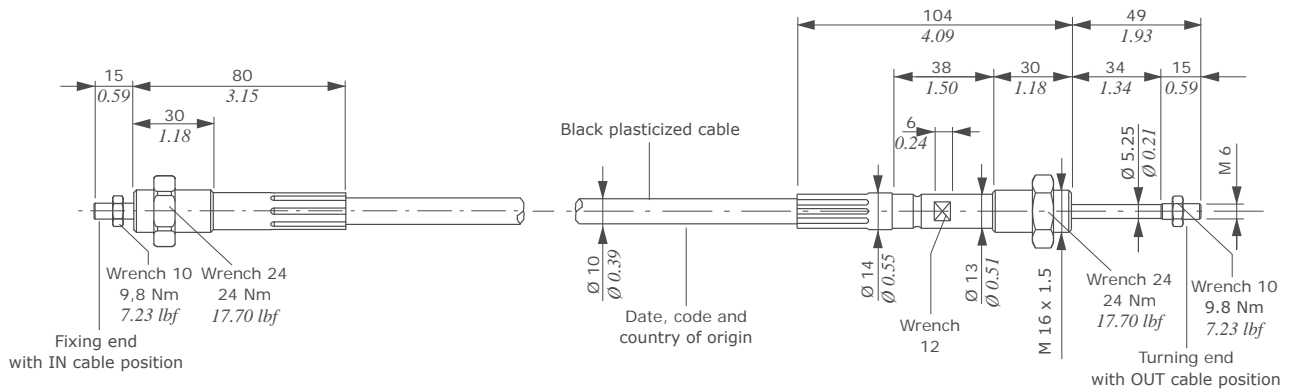
Working conditions

Max. load: in traction	1450 N - 340 lbf
in compression	880 N - 198 lbf
Minimum recommended bend radius	R = 150 mm - 5.9 in
Working temperature	from -20 to 80 °C - from -4°F to 176°F
Maximum recommended length	5000 mm - 157.48 in

Dimensions

CD cable

Flexible polyurethane cable with 5 wires: 0.75 mm² - 0.0012 in² (Ø external 5.2 mm - 0.20 in, Ø wire 1.55 mm - 0.06 in) with one fixing end and one turning end.



CG cable

Flexible polyurethane cable with 5 wires: 0.75 mm² - 0.0012 in² (Ø external 5.2 mm - 0.20 in, Ø wire 1.55 mm - 0.06 in) with both turning ends.

