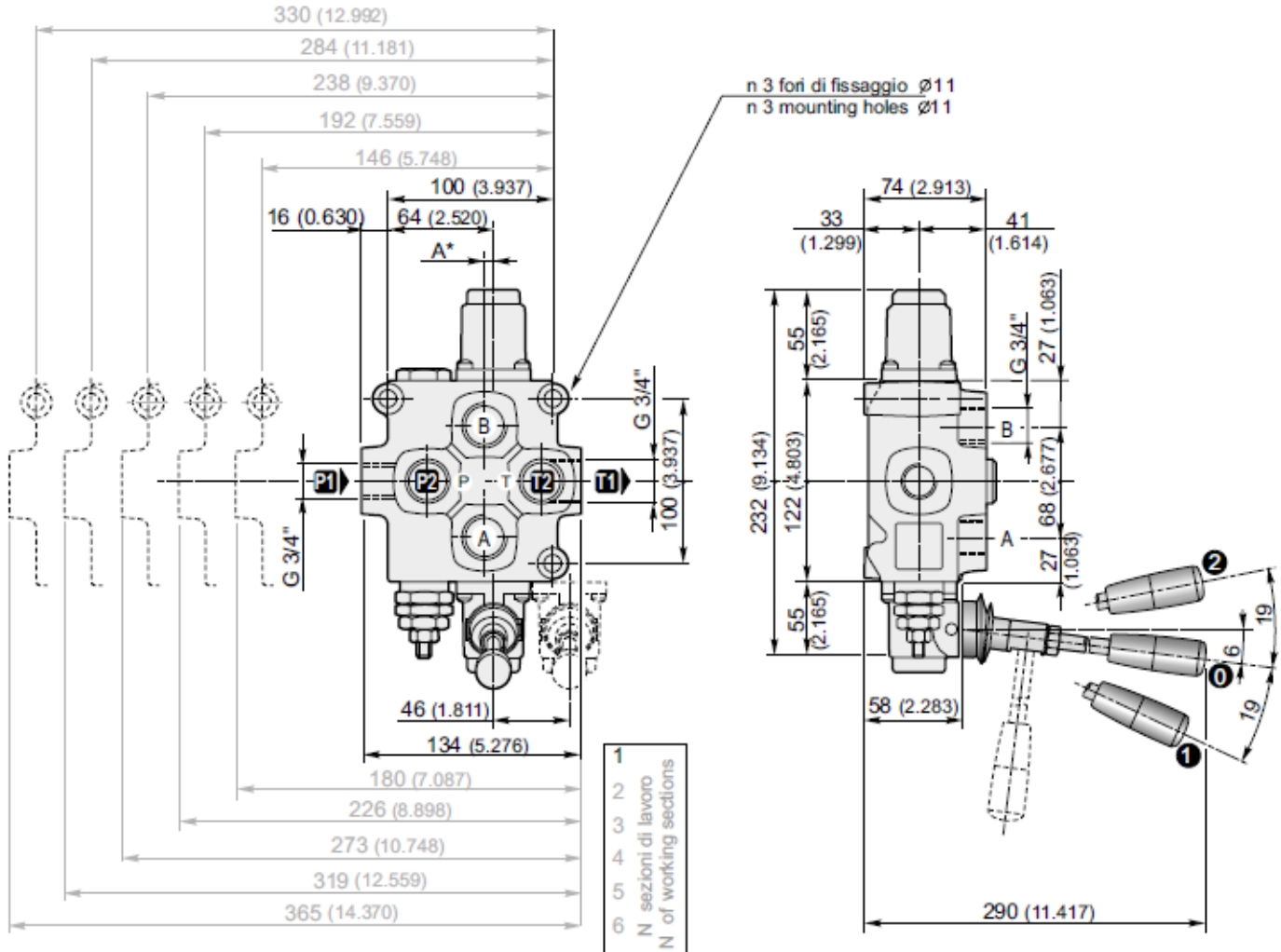
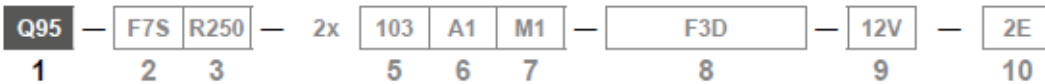


(Standard)
Comando e posizionale in Alluminio
Control and positioner Aluminium



* A= 5.5 per monoblocco a 1 sezione; A=0 per monoblocco a 2-3-5-6 sezioni di lavoro
* A= 5.5 for 1 working section, A=0 for 2-3-5-6 working section



Filettature disponibili / Available ports

Bocche Ports	BSP (standard)	SAE
P1	G 3/4"	1" 1/16" - 12 UN (SAE 12)
P2	G 3/4"	1" 1/16" - 12 UN (SAE 12)
A-B	G 3/4"	1" 1/16" - 12 UN (SAE 12)
T1	G 3/4"	1" 1/16" - 12 UN (SAE 12)
T2	G 3/4"	1" 1/16" - 12 UN (SAE 12)

Tappo per carry-over (su uscita T1)
Carry-over plug (on T1 port)

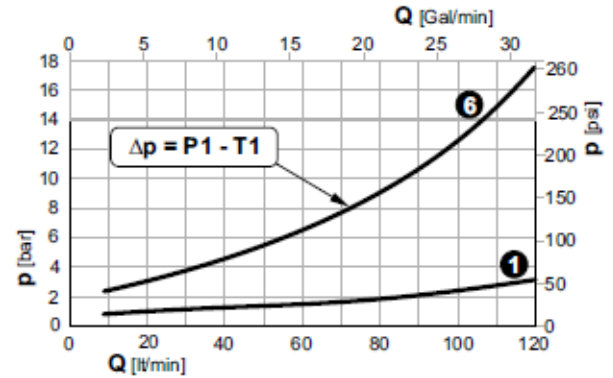
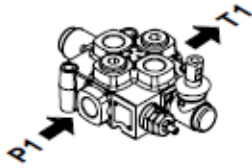
		T1		X	
	G 3/4"	1" 1/16" - 12 UN (SAE 12)	G 3/4"	7/8" - 14 UNF (SAE 10)	

Perdite di carico con il cursore in posizione neutra

(Δp in funzione del numero di sezioni attraversate)

Pressure drop with spool in neutral position

(Δp depending on the number of the crossed sections)

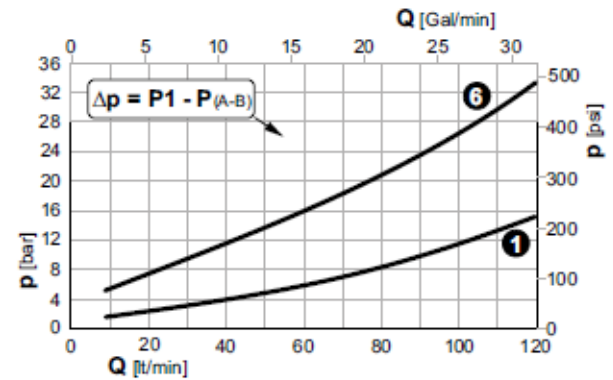
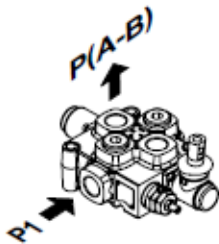


Perdite di carico con il cursore in posizione di lavoro

(Δp in funzione del numero di sezioni attraversate)

Pressure drop with spool in working position

(Δp depending on the number of the crossed sections)

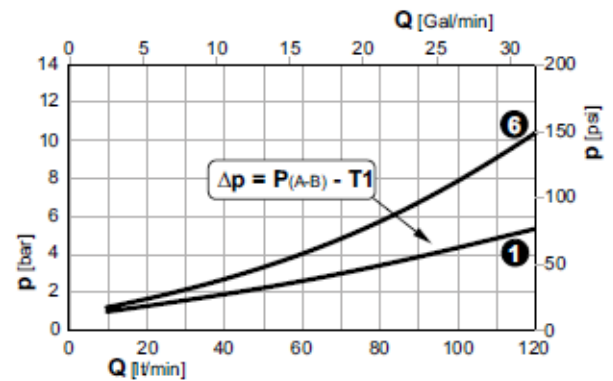
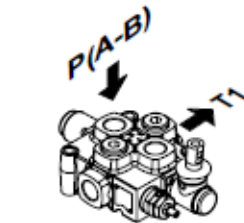


Perdite di carico con il cursore in posizione di lavoro

(Δp in funzione del numero di sezioni attraversate)

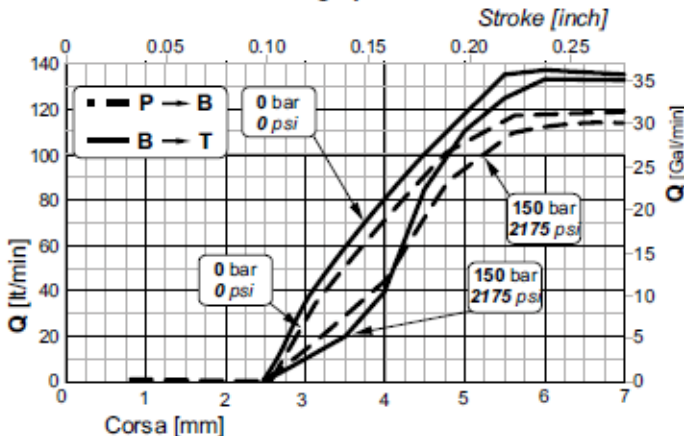
Pressure drop with spool in working position

(Δp depending on the number of the crossed sections)



1 6 Sezioni / Sections

Curve di progressività
Metering spool



Trafilamenti sul cursore
Spool leakage

