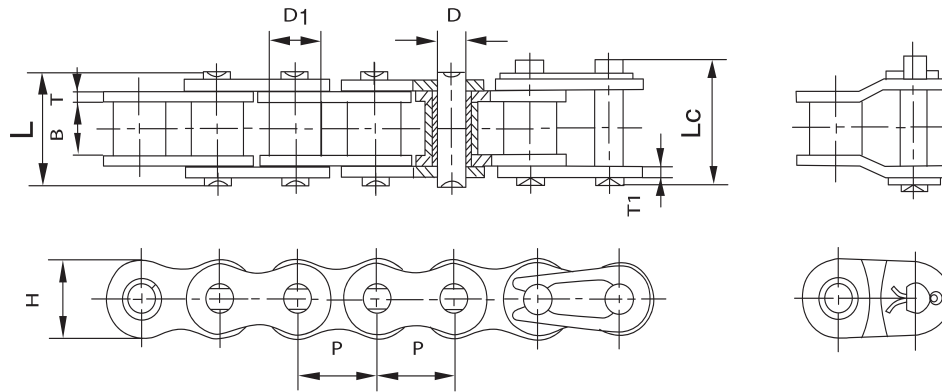


ROLLER CHAINS AMERICAN SERIES REINFORCED



Referencia Reference Référence		Paso Pitch Pas	Ancho interior Inner width Largeur intérieur	Ø Rodillo Roller Rouleau	Ø Eje Pin Axe	Longitud eje Pin length Longueur axe		Ancho malla Plate width Largeur plaques	Espesor malla Plate thickness Épaisseur plaques	Paso transversal Transverse pitch Pas transversal	Carga de rotura Breaking load Charge rupture	Peso por metro Weight per meter Poids par mètre
DIN/ISO	ANSI	P mm	B min	D1 max mm	D max mm	L max mm	Lc max mm	H max mm	T max mm	Pt mm	Q min KN	q Kg/m
	*35H-1	9.525	4.77	5.08	3.58	13.3	14.3	9.00	1.50		10.8	0.41
08AH-1	40H-1	12.700	7.85	7.95	3.96	18.8	19.9	12.00	2.03		19.1	0.82
10AH-1	50H-1	15.875	9.40	10.16	5.08	22.1	23.4	15.09	2.42		30.2	1.25
12AH-1	60H-1	19.050	12.57	11.91	5.94	29.2	31.0	18.00	3.25		42.7	1.87
16AH-1	80H-1	25.400	15.75	15.88	7.92	36.2	37.7	24.00	4.00		71.4	3.10
20AH-1	100H-1	31.750	18.90	19.05	9.53	43.6	46.9	30.00	4.80		112.4	4.52
24AH-1	120H-1	38.100	25.22	22.23	11.10	53.5	57.5	35.70	5.60		160.9	6.60
28AH-1	140H-1	44.450	25.22	25.40	12.70	57.6	62.2	41.00	6.40		217.3	8.30
32AH-1	160H-1	50.800	31.55	28.58	14.27	68.2	73.0	47.80	7.20		285.8	10.30
36AH-1	180H-1	57.150	35.48	35.71	17.46	75.9	81.6	53.60	8.00		341.8	14.83
40AH-1	200H-1	63.500	37.85	39.68	19.85	86.6	93.5	60.00	9.50		444.5	19.16
48AH-1	240H-1	76.200	47.35	47.63	23.81	109.6	115.9	72.30	12.70		622.5	30.40
12AH-2	60H-2	19.050	12.57	11.91	5.94	55.3	57.1	18.00	3.25	26.11	84.5	3.71
16AH-2	80H-2	25.400	15.75	15.88	7.92	68.8	70.3	24.00	4.00	32.59	145.3	6.15
20AH-2	100H-2	31.750	18.90	19.05	9.53	82.7	86.0	30.00	4.80	39.09	225.9	9.03
24AH-2	120H-2	38.100	25.22	22.23	11.10	102.4	106.4	35.70	5.60	48.87	322.7	13.13
28AH-2	140H-2	44.450	25.22	25.40	12.70	109.8	114.4	41.00	6.40	52.20	437.7	16.60
32AH-2	160H-2	50.800	31.55	28.58	14.27	130.1	134.9	47.80	7.20	61.90	571.6	20.20
40AH-2	200H-2	63.500	37.85	39.68	19.85	164.9	171.8	60.00	9.50	78.31	894.9	38.11
12AH-3	60H-3	19.050	12.57	11.91	5.94	81.4	83.2	18.00	3.25	26.11	113.9	5.54
16AH-3	80H-3	25.400	15.75	15.88	7.92	101.4	102.9	24.00	4.00	32.59	203.5	9.42
20AH-3	100H-3	31.750	18.90	19.05	9.53	121.8	125.1	30.00	4.80	39.09	314.8	12.96
24AH-3	120H-3	38.100	25.22	22.23	11.10	151.2	155.2	35.70	5.60	48.87	444.7	19.64
28AH-3	140H-3	44.450	25.22	25.40	12.70	162.0	166.6	41.00	6.40	52.20	598.4	24.90
32AH-3	160H-3	50.800	31.55	28.58	14.27	192.0	196.8	47.80	7.20	61.90	787.3	30.10
40AH-3	200H-3	63.500	37.85	39.68	19.85	243.2	250.1	60.00	9.50	78.31	1228.2	57.06