

HYDROSTATIC STEERING UNIT TYPE HKU.../7

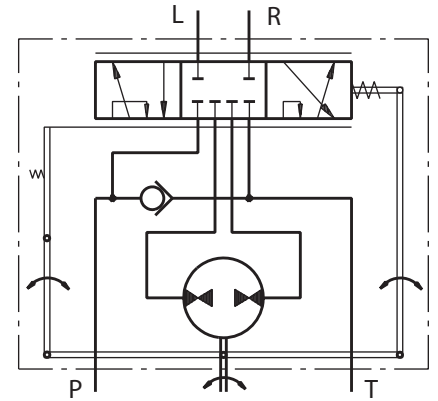


The HKU.../7 is a "Closed Center - Non Load Reaction" hydrostatic steering unit, designed for integration into systems with built-in hydroaccumulator, achieving minimal energy losses.

When connecting to a differential cylinder the L and R ports of the steering unit must be connected as follows: L to the greater piston area, and R - to the smaller one.

For the "Closed Center - Non Load Reaction" and "Closed Center - Non Reaction and Load Sensing" steering units is possible to observe Thermal Shock - condition caused when the hydraulic system has operated for some time without turning the steering wheel, causing the fluid in the reservoir and

the system to heat up while the steering unit is relatively cool (i.e. there is more than 500F [100C] difference in the temperature). If, under the condition of Thermal Shock, the steering wheel is turned very quickly, it is possible to experience temporary seizure and have the internal parts of the steering unit damaged. The temporary seizure may be followed by a total free wheeling.



"Closed Center - Non Load Reaction"
Version 7 - HKU.../7

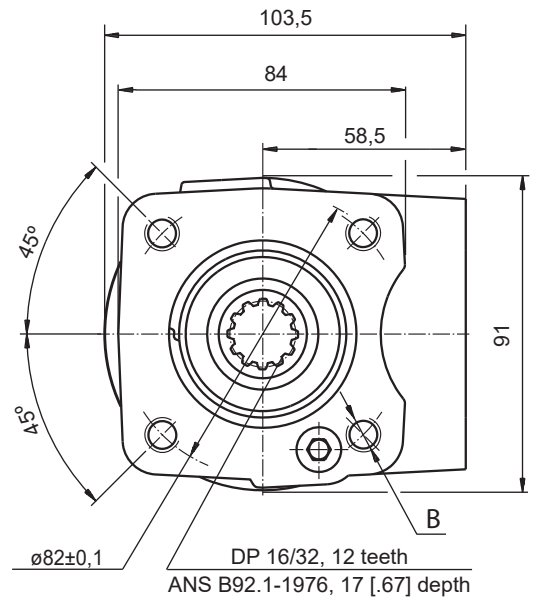
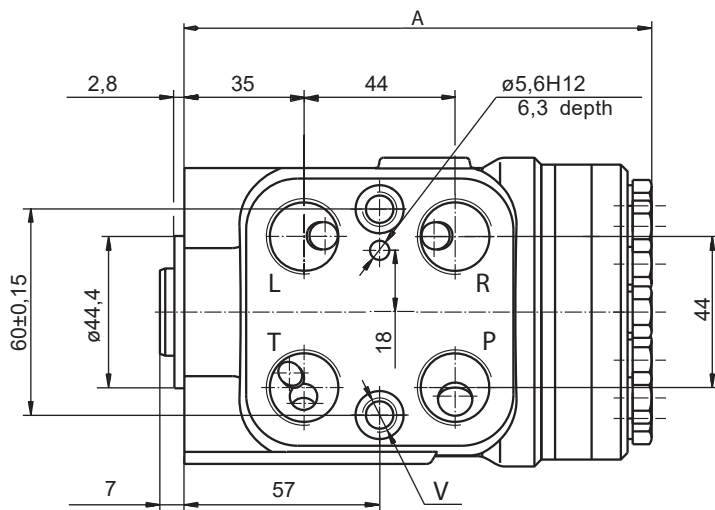
SPECIFICATION DATA

Parameters	Type		
	HKU 125/7	HKU 200/7	
Displacement	cm ³ /rev [in ³ /rev]	123,8 [7.56]	198 [12.1]
Rated Flow*	lpm [GPM]	13 [3.4]	20 [5.3]
Rated Pressure	bar [PSI]	175 [2540]	
Max. Cont. Pressure in Line T	bar [PSI]		
- standard		25 [363]	
- high pressure (H option)		40 [580]	
Max. Torque at Servoamplifying	Nm [lb-in]		
- with standard springs		3,0 [26]	
- with soft springs (LT option)		1,8 [16]	
Max. Torque w/o Servoamplifying	Nm [lb-in]	120 [1065]	
Weight	kg [lb]	5,8 [12.8]	6,3 [13.9]
Dimension A	mm [in]	142,2 [5.60]	152,2 [5.99]

* Inlet flow providing maximum speed of rotation:

- 100 RPM - from HKU40 to HKU630;
- 87 RPM - for HKU800.

DIMENSIONS AND MOUNTING DATA - HKU.../3, 4, 7



Code	Ports - P, T, R, L Thread	Column Mounting Thread - B	Valve Mounting Thread - V
-	G1/2 17 [.67] depth	4 x M10 18 [.71] depth	2 x M10x1 16 [.63] depth
M	M22x1,5 17 [.67] depth	4 x M10 18 [.71] depth	2 x M10x1 16 [.63] depth
A	3/4 - 16 UNF O-ring 17 [.67] depth	4 x 3/8 - 16 UNC 15,7 [.62] depth	2 x 3/8 - 24 UNF 14,2 [.56] depth
BA*	9/16 - 18 UNF O-ring 17 [.67] depth	4 x 3/8 - 16 UNC 15,7 [.62] depth	2 x 3/8 - 24 UNF 14,2 [.56] depth

* These threads are for displacements from HKU40 to HKU200 only.