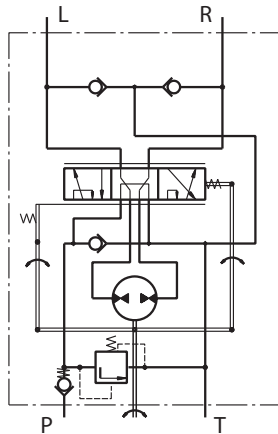


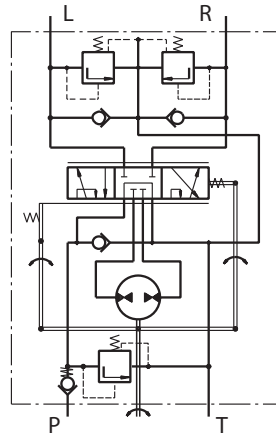
HYDROSTATIC STEERING UNITS TYPE HKUS.../3, 4, 8



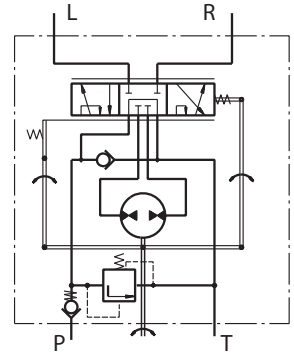
The HKUS Hydrostatic Steering unit is based on the HKU unit but has built-in relief and check valves. Thus M+S Hydraulic achieves one very compact steering unit which reduces the need for additional hydraulic components in the system.



"Open Center - Load Reaction"
HKUS.../3



"Open Center - Non Load Reaction"
HKUS.../4



"Open Center - Non Load Reaction"
HKUS.../8

SPECIFICATION DATA

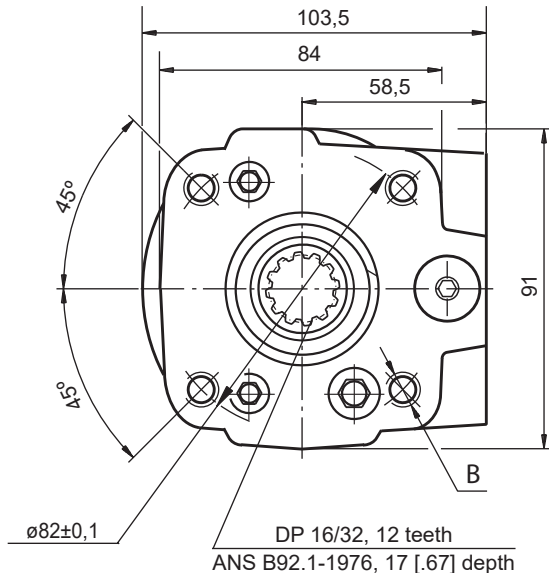
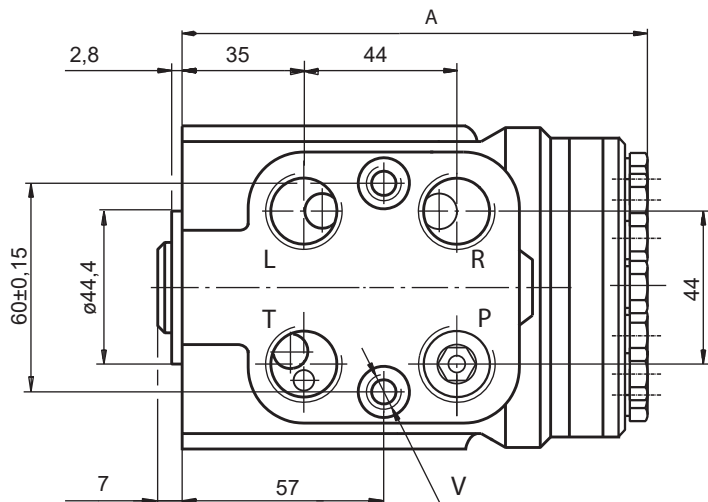
Parameters	Type												
		HKUS 50/3,4,8		HKUS 80/3,4,8	HKUS 100/3,4,8	HKUS 125/3,4,8	HKUS 160/3,4,8	HKUS 200/3,4,8	HKUS 250/3,4,8		HKUS 400/3,4,8		
Displacement	cm ³ /rev [in ³ /rev]	49,5 [3.0]		79,2 [4.83]	99,0 [6.04]	123,8 [7.56]	158,4 [9.67]	198 [12.1]	247,5 [15.1]		396 [24.2]		
Rated Flow*	lpm [GPM]	5 [1.3]		8 [2.1]	10 [2.6]	13 [3.4]	16 [4.2]	20 [5.3]	25 [6.6]		40 [10.6]		
Rated Pressure	bar [PSI]	140 [2030]		170 [2465]									
Relief Valve Pressure		80		100	125	150		170					
Settings**	bar [PSI]	[1160]		[1450]	[1810]	[2175]		[2465]					
Shock Valves Pressure		140		160	180	200		220					
Settings***	bar [PSI]	[2030]		[2320]	[2610]	[2900]		[3190]					
Max. Cont. Pressure in Line T	bar [PSI]	25 [363] (50 [725] by HKUS.../8)											
- standard													
- high pressure (H option)		40 [580]											
Max. Torque at Servoamplifying	Nm [lb-in]	3,0 [26]					3,0 [26]						
- with standard springs		1,8 [16]					-						
- with soft springs (LT option)													
Max. Torque w/o Servoamplifying	Nm [lb-in]	120 [1065]											
Weight	kg [lb]	5,4 [11.9]		5,6 [12.4]	5,7 [12.6]	5,8 [12.8]	6,0 [13.2]	6,3 [13.9]	6,5 [14.3]		7,4 [16.3]		
Dimension A	mm [in]	132,2 [5.20]		136,2 [5.36]	138,8 [5.47]	142,2 [5.60]	146,8 [5.78]	152,2 [5.99]	158,8 [6.25]		178,8 [7.04]		

* Rated Flow at 100 RPM.

** Pressure Settings are at Rated Flow (as in the table) and viscosity 21 mm²/s [105 SUS] at 50°C [122°F].

*** Pressure Settings are at flow rate of 2 lpm [.53 GPM] and viscosity 21 mm²/s [105 SUS] at 50°C [122°F].

DIMENSIONS AND MOUNTING DATA - HKUS.../3, 4, 8



Code	Ports - P*, T, R, L Thread	Column Mounting Thread - B	Valve Mounting Thread - V
-	G1/2 17 [.67] depth	4 x M10 18 [.71] depth	2 x M10x1 16 [.63] depth
M	M22x1,5 17 [.67] depth	4 x M10 18 [.71] depth	2 x M10x1 16 [.63] depth
A	3/4 - 16 UNF O-ring 17 [.67] depth	4 x 3/8 - 16 UNC 15,7 [.62] depth	2 x 3/8 - 24 UNF 14,2 [.56] depth



*Threaded Ports P min 15 [.59] depth for pipe mounting.

ORDER CODE

1	2	3	4	5	6	7	8	9
HKUS	/	-	-					

Pos.1 - Displacement code (see Specification Data)

40	-	39,6 cm ³ /rev [2.42 in ³ /rev]
50	-	49,5 cm ³ /rev [3.00 in ³ /rev]
63	-	65,6 cm ³ /rev [4.00 in ³ /rev]
80	-	79,2 cm ³ /rev [4.83 in ³ /rev]
100	-	99,0 cm ³ /rev [6.04 in ³ /rev]
125	-	123,8 cm ³ /rev [7.56 in ³ /rev]
160	-	158,4 cm ³ /rev [9.67 in ³ /rev]
200	-	198,0 cm ³ /rev [12.10 in ³ /rev]
250	-	247,5 cm ³ /rev [15.10 in ³ /rev]
320	-	316,8 cm ³ /rev [19.30 in ³ /rev]
400	-	396,0 cm ³ /rev [24.20 in ³ /rev]
500	-	495,0 cm ³ /rev [30.20 in ³ /rev]

Pos.2 - Versions

3	-	Version 3 "Open Center - Load Reaction"
4	-	Version 4 "Open Center - Non Load Reaction"
8	-	Version 8 "Open Center - Non Load Reaction"

Pos.3 - Relief Valve Pressure Settings, bar

80, 100, 125, 150, 170

Pos.4 - Ports

omit	-	BSPP (ISO 228)
A	-	SAE (ANSI B 1.1 - 1982)
M	-	Metric (ISO 262)

Pos.5 - Max. Cont. Pressure in line T

omit	-	Standard
H	-	High pressure

Pos.6 - Input torque

omit	-	Standard
LT*	-	Low

Pos.7 - Noise level

omit	-	Standard
LN*	-	Low

Pos.8 - Option (Paint)* **

omit	-	No Paint
P	-	Painted
PC	-	Corrosion Protected Paint
PS	-	Special Paint****
PCS	-	Special Corrosion Protected Paint****

Pos.9 - Design Series

omit - Factory specified

Version	Manual Steering Check Valve	Relief Valve	Inlet Check Valve	Cylinder Relief Valve	Anti-Cavitation Valve
3	•	•	•		•
4	•	•	•	•	•
8	•	•	•		

Notes: * Available only for displacement from 40 to 200.
 ** Colour at customer's request.
 *** Non painted feeding surfaces, colour at customer's request.

The steering units are mangano-phosphatized as standard.