

# PRIORITY VALVES FOR HKUS.../5... TYPE PR...



The Priority Valves distribute and trace the hydraulic flow from the supply pump of the hydraulic system to the hydraulic components which control and run the vehicle.

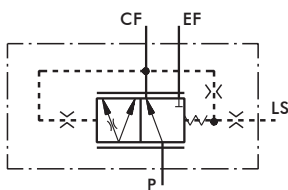
The Priority Valves are used only with the HKUS.../5(D)(T) hydrostatic steering units. When connected, the steering unit and the priority valve represent sophisticated hydraulic tracing system that controls the flow in both main pipelines of the hydraulic system (the working and control one) at any time of its operation.

As a static signal, the "LS" signal must be used in systems with circuit stability. The connection between the PRT, PRTA priority valves and the HKUS.../5T steering units has to be as short as possible, but should not exceed 1,5 m [4.92 ft] (for iron pipe with 4 mm [.157 in.] internal diameter). When a rubber hose is used this length has to be even shorter.



Priority valves with dynamic signal work in a system with dynamic hydrostatic steering units type HKUS.../5D (5DT).

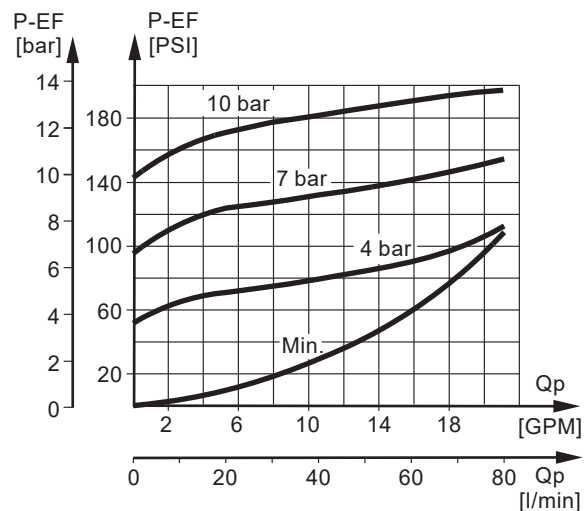
## Pipe Mounting



Dynamic signal

PRTD 40,80,120/...,PRTAD40,80/...

## PR...80

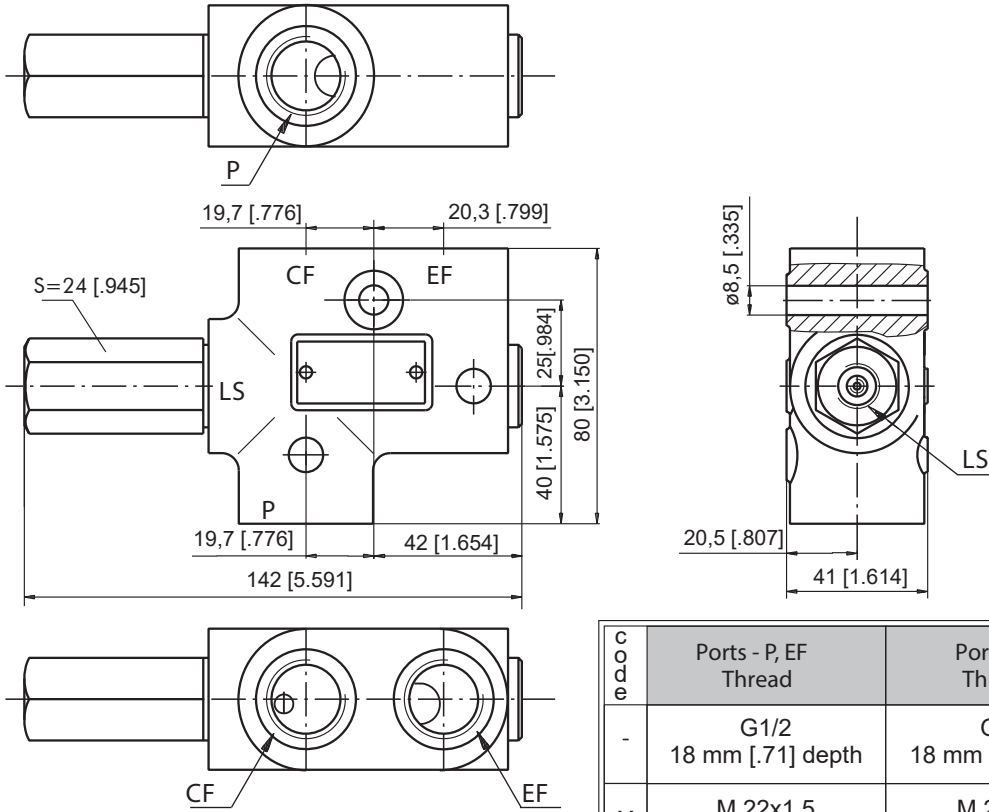


## SPECIFICATION DATA

Parameters	Type			
	PRTA(D)			
Rated Flow	lpm [GPM]	40 [10.6]	80 [21.1]	
Control Spring Pressure	bar [PSI]	4 [58]	7 [101.5]	10 [145]
Max. Pressures in Oil Ports:		250 [3625]		
	P, EF			
	CF	210 [3045]		
	bar [PSI]			
	R, L			
	LS	210 [3045]		
	PP			
	T			
Weight	kg [lb]	1,3 [2.87]		

P - pump, EF - excess flow, CF - control flow (first priority oil flow),  
L - left, R - right, LS - load sensing, T - tank PP - pilot pressure (L, R and T - for PRD(D) only).

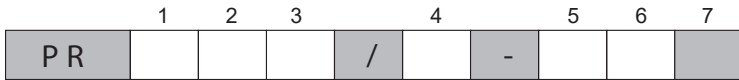
**DIMENSIONS AND MOUNTING DATA - PRTA(D) 40, 80/...**



code	Ports - P, EF Thread	Port - CF Thread	LS - Port
-	G1/2 18 mm [.71] depth	G1/2 18 mm [.71] depth	G1/4 14 mm [.55] depth
M	M 22x1,5 18 mm [.71] depth	M 22x1,5 18 mm [.71] depth	G1/4 14 mm [.55] depth
A	7/8 - 14 UNF O-ring 18 [.71] depth	3/4 - 16 UNF O-ring 18 [.71] depth	7/16 - 20 UNF O-ring 12,7 [.50] depth



**ORDER CODE**



**Pos.1 - Mounting**

- D - Modularly Mounting
- T - Pipe Mounting (Model 1)
- TA - Pipe Mounting (Model 2)

**Pos.2 - Signal Type**

- omit - with Static signal
- D - with Dynamic signal
- E\* - with Static signal and External Pilot

**Pos.3 - Rated Flow, l/min**

40	80	120**	160**
----	----	-------	-------

**Pos.4 - Control Spring Pressure, bar**

4	7	10
---	---	----

**Pos.5 - Ports**

- omit - BSPP (ISO 228)
- M - Metric (ISO 262)
- A - SAE (ANSI B 1.1 - 1982)

**Pos.6 - Option [Paint]\*\*\***

- omit - No Paint
- P - Painted
- PC - Corrosion Protected Paint

**Pos.7 - Design Series**

- omit - Factory specified

Notes: \* For PRT 120/... and PRT 160/... only  
 \*\* For PRT only  
 \*\*\* Colour at customer's request.

The priority valves are manganophosphatized as standard.