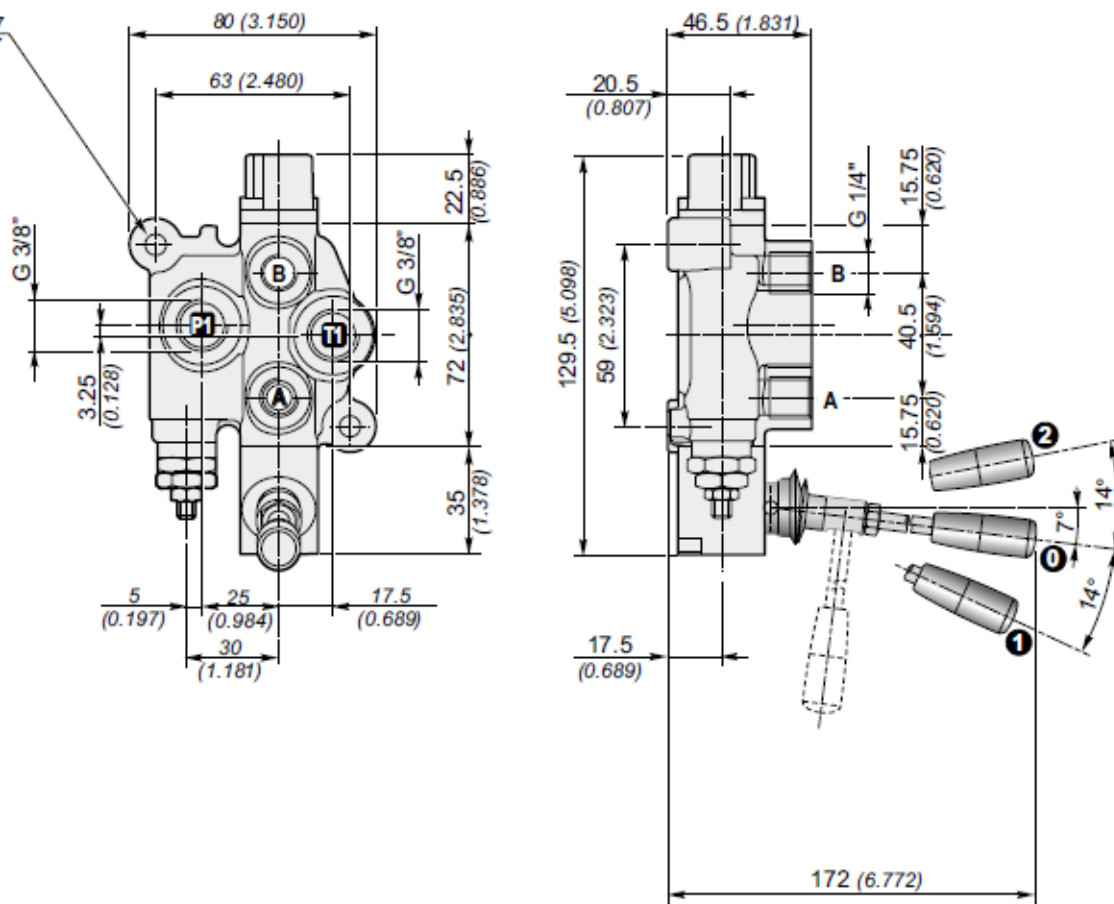


n°2 fori di fissaggio $\varnothing 7$
n°2 mounting holes $\varnothing 7$



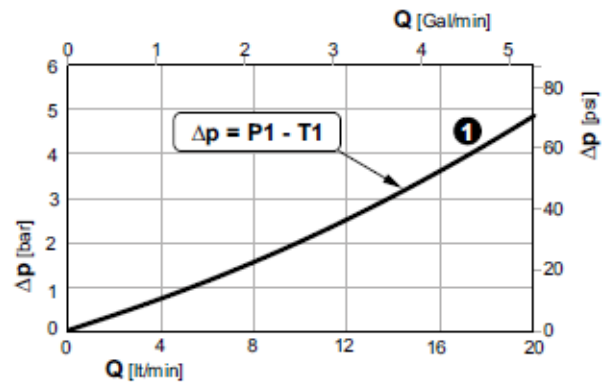
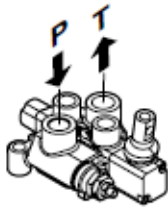
Q15 — F7S N250 —
1 2 3

103 A1 M1 — F3D
5 6 7 8

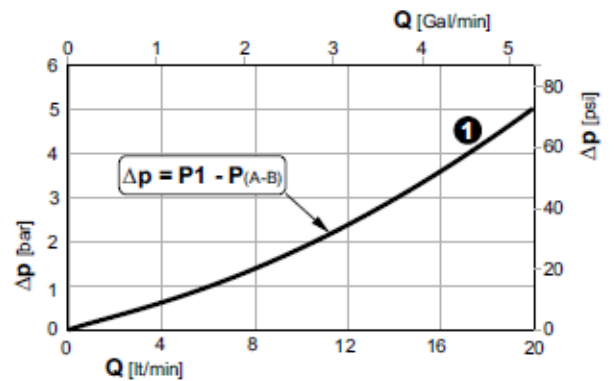
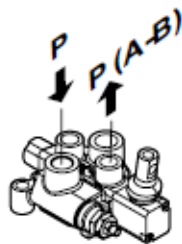
Filettature disponibili / Available ports

Bocche Ports	BSP (standard)	SAE
P - T	G 3/8"	3/4" - 16UNF (SAE 8)
A - B	G 1/4"	9/16" - 18UNF (SAE 6)

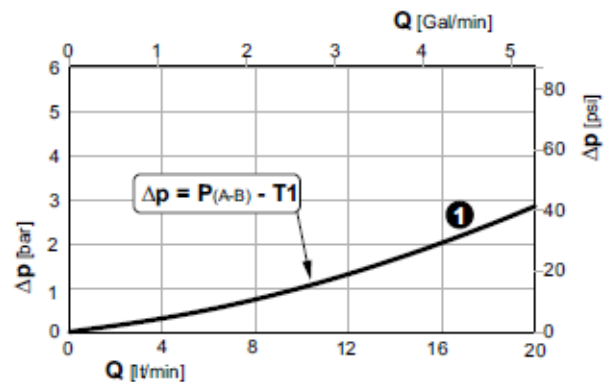
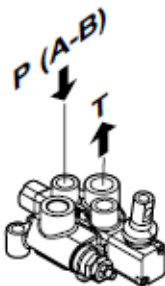
Perdite di carico con il cursore in posizione neutra
Pressure drop with spool in neutral position



Perdite di carico con il cursore in posizione di lavoro
Pressure drop with spool in working position



Perdite di carico con il cursore in posizione di lavoro
Pressure drop with spool in working position



① Sezioni / Sections

