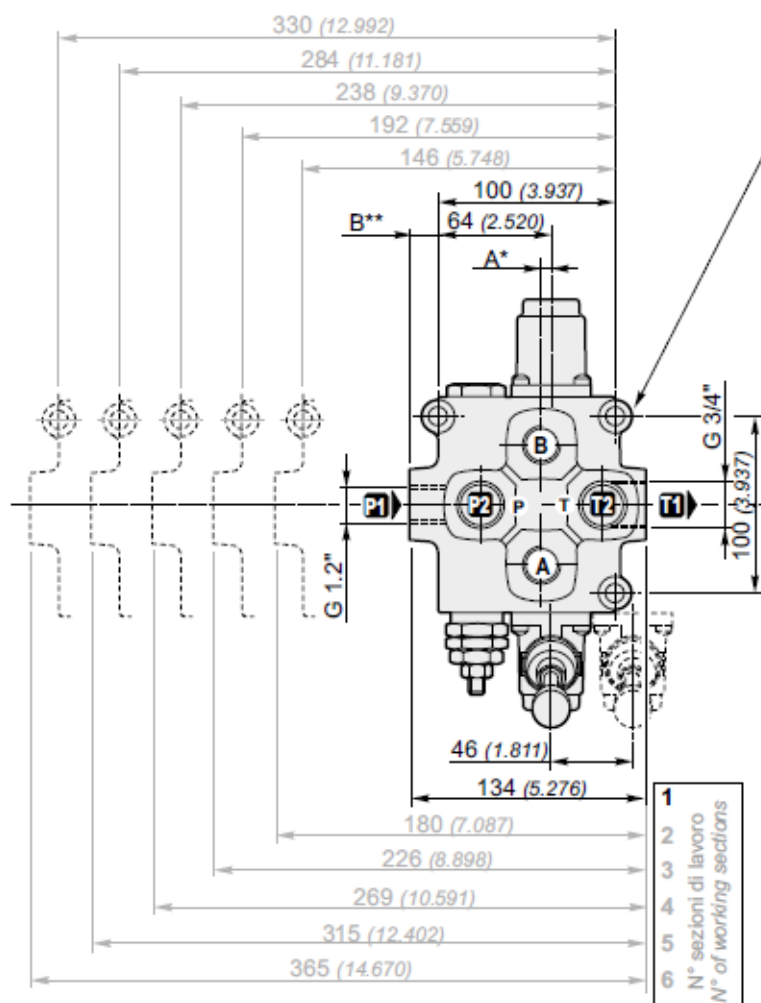
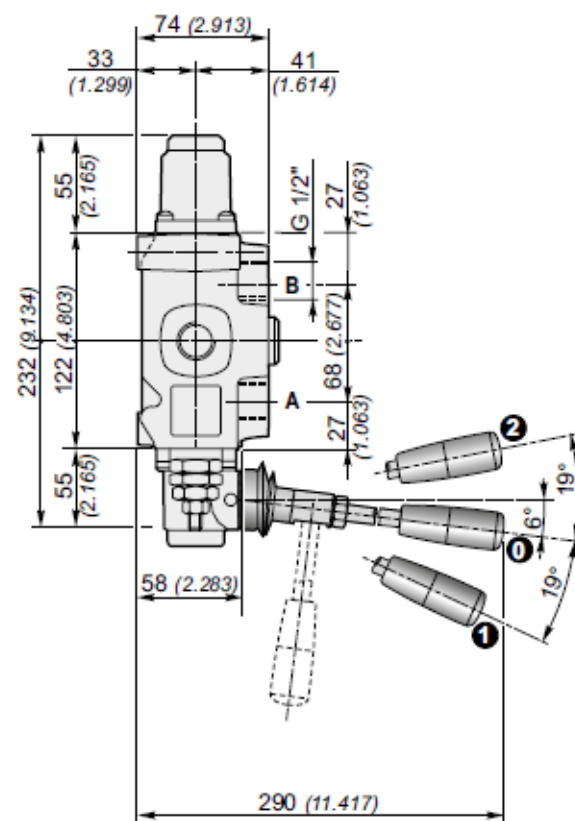


(Standard)  
Comando e posizionario in Alluminio  
Control and positioner Aluminium



n°3 fori di fissaggio Ø 11  
n°3 mounting holes Ø 11



\* A=5.5 per monoblocco ad 1 sezione, A=0 per monoblocchi a 2, 3, 4, 5, 6 sezioni di lavoro

\* A = 5.5 for 1 working section, A=0 for 2, 3, 4, 5 and 6 working sections

\*\* B=16 per monoblocco ad 1, 2, 3, 6 sezioni, B=13 per monoblocchi a 4 e 5 sezioni di lavoro

\*\* B=16 for 1, 2, 3, 6 working section, B=13 for 4 and 5 working sections

Q75 — F7S R250 — 2x 103 A1 M1 — F3D — 12V — 2E  
1 2 3 5 6 7 8 9 10

Filettature disponibili / Available ports

Bocche Ports	BSP (standard)	SAE
P1	G 1/2"	7/8" - 14 UNF (SAE 10)
P2	G 1/2"	7/8" - 14 UNF (SAE 10)
A-B	G 1/2"	7/8" - 14 UNF (SAE 10)
T1	G 3/4"	1" 1/16" - 12 UN (SAE 12)
T2	G 1/2"	7/8" - 14 UNF (SAE 10)

Tappo per carry-over (su uscita T1)  
Carry-over plug (on T1 port)

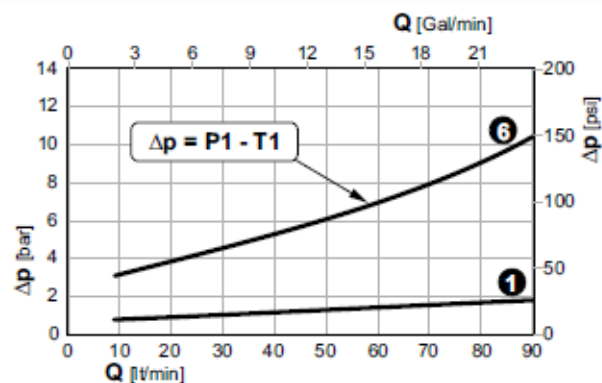
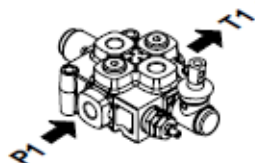
T1		X	
G 3/4"	1" 1/16" - 12 UN (SAE 12)	G 1/2" G 3/4"	7/8" - 14 UNF (SAE 10)

**Perdite di carico con il cursore in posizione neutra**

(Δp in funzione del numero di sezioni attraversate)

**Pressure drop with spool in neutral position**

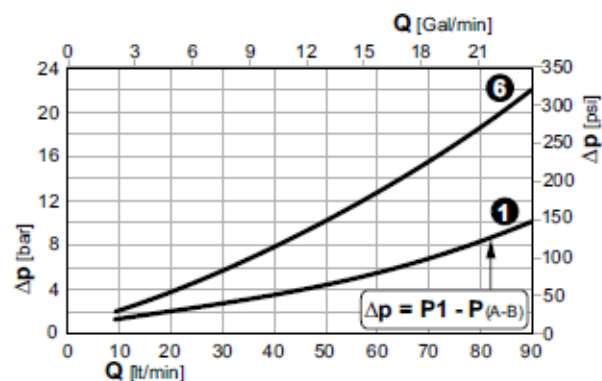
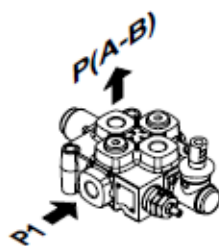
(Δp depending on the number of the crossed sections)

**Perdite di carico con il cursore in posizione di lavoro**

(Δp in funzione del numero di sezioni attraversate)

**Pressure drop with spool in working position**

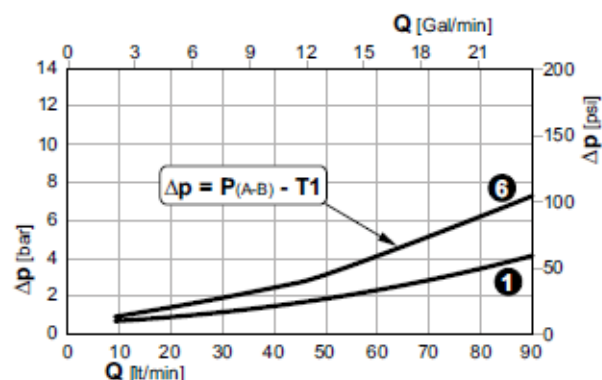
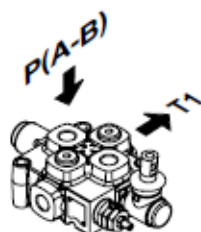
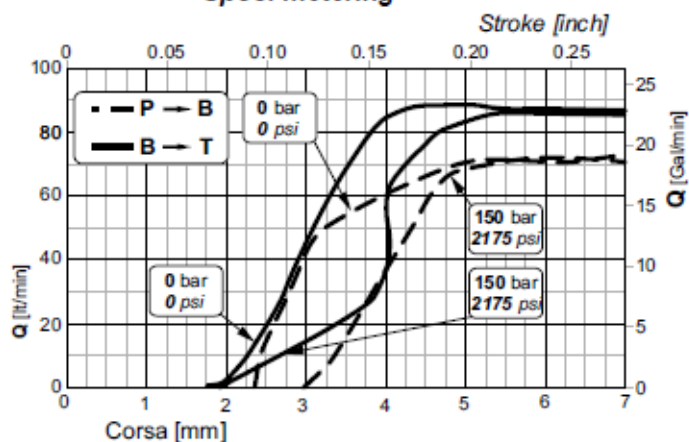
(Δp depending on the number of the crossed sections)

**Perdite di carico con il cursore in posizione di lavoro**

(Δp in funzione del numero di sezioni attraversate)

**Pressure drop with spool in working position**

(Δp depending on the number of the crossed sections)

**1 6** Sezioni / Sections**Curve di progressività  
Spool metering****Trafilamenti sul cursore  
Spool leakage**