



# P51

## POWERFUL TABLE TOP CRIMPER

Multi-purpose table top crimping machine for hydraulic and industrial hoses. Easy part positioning with fixed center point crimping head.

### TECHNICAL DATA

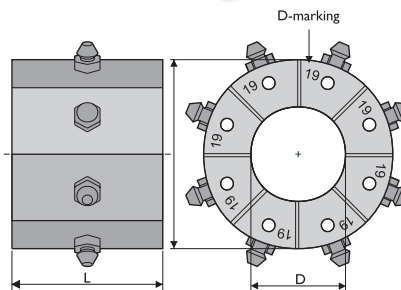
Max crimping dia (mm) <sup>1)</sup>	124
Max crimping dia (inch) <sup>1)</sup>	4.88
Max crimping force (kN)	2800
Max crimping force (tonnage)	280
Cycle time 10 mm <sup>2)</sup>	6.1
Hose size ID (inch)	2 ½ (25N) / 4"
Die set series	32/140
Max opening (mm) <sup>3)</sup>	+46
Max opening without dies (mm)	186
Master die D/L (mm)	140/120
Master die D/L (inch)	5.52-4.73
Motor Power (kW/HP)	4 / 5.5
Oil tank volume	50 l

### DIMENSIONS (LxWxH)

(mm)	706x473x758
(inch)	27.8x18.7x29.9

### WEIGHT (KG/LBS)

260/573



- 1) With standard dies. Crimping range can be increased with special dies.
- 2) Theoretical with 10 mm cycle.
- 3) Maximum opening is the total die travel. Add this value to the minimum crimping diameter of the die set used. The result is the maximum opening of the machine with die set in place.

### CONTROL

MS  
UC

### STANDARD FEATURES

Adapter dies  
Mechanical back stop device (MS)  
Electric backstop (UC)

### OPTIONS

Foot pedal  
Mirror  
Mechanical back stop device (UC)  
Electric backstop (MS)  
Tool Base  
Die rack  
QuickChange-tool

### OPTIONS (UC)

Pressure crimping UC1  
Step crimping UC2  
Quality control UC3  
A3 signal

### DIE SET 140-SERIES

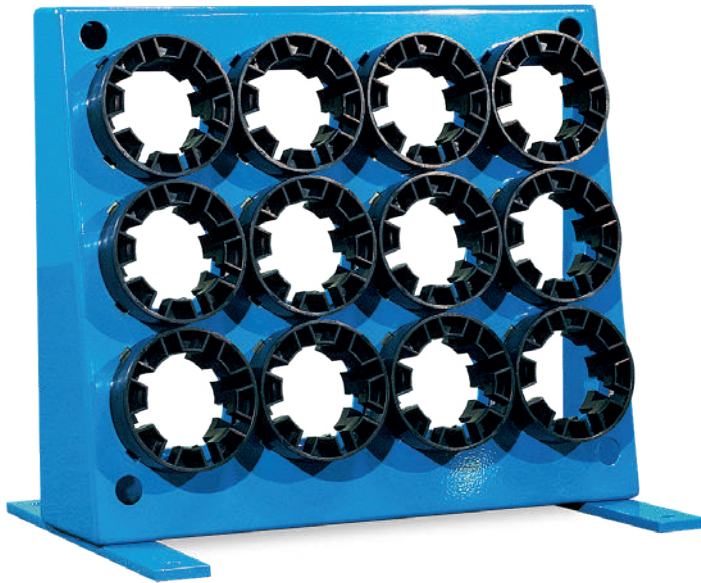
DieSetNo	D (mm)	L (mm)	Crimp. range (mm)
18860/84	84	110	84.0-92.0
18860/92	92	110	92.0-100.0
18860/100	100	110	100.0-108.0
18860/108	108	110	108.0-116.0
18860/116	116	110	116.0-124.0

### DIE SET 32-SERIES

DieSetNo	D (mm)	L (mm)	Crimp. range (mm)
18506/10	10	55	10.0-12.0
18506/12	12	55	12.0-14.0
18506/14	14	55	14.0-16.0
18506/16	16	55	16.0-19.0
18506/19	19	55	19.0-22.0
18506/22	22	70	22.0-26.0
18506/26	26	70	26.0-30.0
18506/30	30	70	30.0-34.0
18506/34	34	75	34.0-39.0
18506/39	39	75	39.0-45.0
18506/45	45	90	45.0-51.0
18506/51	51	90	51.0-57.0
18506/57	57	100	57.0-63.0
18506/63	63	110	63.0-69.0
18506/69	69	110	69.0-75.0
18506/74	74	110	74.0-80.0
18506/78	78	110	78.0-87.0

In addition to the standard die sets, a wide range of special die sets is available on request.

FURTHER INFO ON OPTIONS,  
PLEASE REVERT TO SPECIFIC PRODUCT CARD



## TOOL BASE & DIE SET RACK

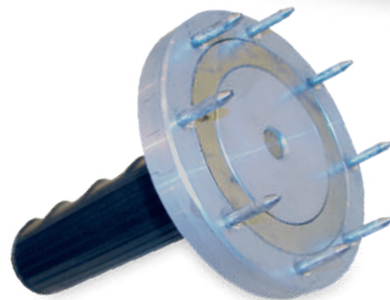
Tool base and die set rack are designed for P-series machines for storing the tools. Tool base is a table capable of holding the machine and die set rack is a stand alone rack for tools only.

20-series tool base and die set rack can store 12 die sets and 32/51/60-series 16 die sets. P20/32NMS tool base can store even 20 die sets.

Tool base and die set rack comes always with Quick Change Tool.



Side die rack as an option, 5 slots (FP120/140/145, compact models only)



# DIE SETS



DIE SET 16-SERIES			
DieSetNo	D (mm)	L (mm)	Crimp. range (mm)
18212/10	10	55	10.0-12.0
18212/12	12	55	12.0-14.0
18212/14	14	55	14.0-16.0
18212/16	16	55	16.0-19.0
18212/19	19	55	19.0-23.0
18212/23	23	55	23.0-27.0
18212/27	27	65	27.0-31.0
18212/31	31	65	31.0-38.0

DIE SET 20-SERIES			
DieSetNo	D (mm)	L (mm)	Crimp. range (mm)
18013/10	10	55	10.0-12.0
18013/12	12	55	12.0-14.0
18013/14	14	55	14.0-16.0
18013/16	16	55	16.0-19.0
18013/19	19	55	19.0-23.0
18013/23	23	55	23.0-27.0
18013/27	27	70	27.0-31.0
18013/31	31	70	31.0-36.0
18013/36	36	75	36.0-41.0
18013/41	41	75	41.0-47.0
18013/47	47	85	47.0-54.0
18013/54	54	85	54.0-61.0

DIE SET NC20-SERIES			
DieSetNo	D (mm)	L (mm)	Crimp. range (mm)
18546/12	12	3	12.0-16.0
18546/16	16	4	16.0-22.0
18546/22	22	4.5	22.0-27.0
18546/27	27	5	27.0-34.0
18546/34	34	5	34.0-41.0
18546/41	41	5	41.0-49.0

DIE SET CC22			
DieSetNo	D (mm)	L (mm)	Crimp. range (mm)
18015/10	10	50	10.0-12.0
18015/12	12	50	12.0-14.0
18015/14	14	50	14.0-16.0
18015/16	16	50	16.0-19.0
18015/19	19	50	19.0-23.0
18015/23	23	50	23.0-27.0
18015/27	27	50	27.0-31.0
18015/31	31	50	31.0-36.0
18015/36	36	50	36.0-41.0
18015/41	41	50	41.0-47.0
18015/47	47	50	47.0-54.0

DIE SET NC30-SERIES			
DieSetNo	D (mm)	L (mm)	Crimp. range (mm)
702044/12	12	3	12.0-14.0
702044/14	14	3	14.0-16.0
702044/16	16	4	16.0-19.0
702044/19	19	4	19.0-22.0
702044/22	22	4.5	22.0-26.0
702044/26	26	4.5	26.0-30.0
702044/30	30	5	30.0-34.0
702044/34	34	5	34.0-39.0
702044/39	39	5	39.0-45.0
702044/45	45	5	45.0-51.0
702044/51	51	5	51.0-57.0
702044/57	57	5	57.0-63.0

DIE SET 32-SERIES			
DieSetNo	D (mm)	L (mm)	Crimp. range (mm)
18506/10	10	55	10.0-12.0
18506/12	12	55	12.0-14.0
18506/14	14	55	14.0-16.0
18506/16	16	55	16.0-19.0
18506/19	19	55	19.0-22.0
18506/22	22	70	22.0-26.0
18506/26	26	70	26.0-30.0
18506/30	30	70	30.0-34.0
18506/34	34	75	34.0-39.0
18506/39	39	75	39.0-45.0
18506/45	45	90	45.0-51.0
18506/51	51	90	51.0-57.0
18506/57	57	100	57.0-63.0
18506/63	63	110	63.0-69.0
18506/69	69	110	69.0-75.0
18506/74	74	110	74.0-80.0
18506/78	78	110	78.0-87.0

DIE SET 32-SERIES (for 145)			
DieSetNo	D (mm)	L (mm)	Crimp. range (mm)
18506/63/120	63	120	63.0-69.0
18506/69/120	69	120	69.0-75.0
18506/74/120	74	120	74.0-80.0
18506/78/120	78	120	78.0-87.0

DIE SET NC40-SERIES			
DieSetNo	D (mm)	L (mm)	Crimp. range (mm)
703955/63	63	5	63.0-69.0
703955/69	69	5	69.2-73.0
703955/73	73	6	73.0-81.0
703955/81	81	7	81.0-93.0
703955/93	93	7	93.0-105.0

DIE SET NC60-SERIES			
DieSetNo	D (mm)	L (mm)	Crimp. range (mm)
715345/100	100	8	100.0-108.0
715345/108	108	8	108.0-116.0
715345/116	116	9	116.0-126.0
715345/126	126	9	126.0-136.0
715345/136	136	10	136.0-146.0
715345/146	146	10	146.0-156.0

DIE SET SP100-SERIES			
DieSetNo	D (mm)	L (mm)	Crimp. range (mm)
701817/10	10	40	10.0-12.0
701817/12	12	40	12.0-14.0
701817/14	14	40	14.0-16.0
701817/16	16	40	16.0-19.0
701817/19	19	40	19.0-23.0
701817/23	23	40	23.0-27.0
701817/27	27	40	27.0-31.0
701817/31	31	40	31.0-36.0
701817/36	36	40	36.0-41.0
701817/41	41	40	41.0-47.0
701817/47	47	40	47.0-54.0

DIE SET 140-SERIES			
DieSetNo	D (mm)	L (mm)	Crimp. range (mm)
18860/84	84	110	84.0-92.0
18860/92	92	110	92.0-100.0
18860/100	100	110	100.0-108.0
18860/108	108	110	108.0-116.0
18860/116	116	110	116.0-124.0

DIE SET 145-SERIES			
DieSetNo	D (mm)	L (mm)	Crimp. range (mm)
18860/84/120	84	120	84.0-92.0
18860/92/120	92	120	92.0-100.0
18860/100/120	100	120	100.0-108.0
18860/108/120	108	120	108.0-116.0
18860/116/120	116	120	116.0-124.0

DIE SET 160-SERIES			
DieSetNo	D (mm)	L (mm)	Crimp. range (mm)
18852/84	84	116	84.0-92.0
18852/92	92	116	92.0-100.0
18852/100	100	116	100.0-108.0
18852/108	108	116	108.0-116.0
18852/116	116	116	116.0-126.0
18852/126	126	116	126.0-136.0
18852/136	136	116	136.0-146.0
18852/146	146	116	146.0-156.0
18852/156	156	116	156.0-166.0
18852/166	166	116	166.0-178.0
18852/178	178	116	178.0-190.0
18852/190	190	116	190.0-202.0

DIE SET 170-SERIES			
DieSetNo	D (mm)	L (mm)	Crimp. range (mm)
405060/205	205	220	205.0-220.0
405060/220	220	220	220.0-235.0
405060/235	235	220	235.0-250.0
405060/250	250	220	250.0-270.0
405060/270	270	220	270.0-290.0
405060/290	290	220	290.0-320.0

In addition to the standard die sets, a wide range of special die sets is available on request.



# SPECIAL DIES

## GENERAL CRIMPING APPLICATIONS

As an addition to standard dies Lillbacka Finn-Power has special dies in stock for most common crimping applications. Including:

- |   |   |
|---|---|
| <p>Different dimensions</p> <ul style="list-style-type: none"> <li>• Small and big diameters</li> <li>• Extra short and long die sets</li> <li>• Customized shapes</li> </ul> | <p>Dies for applications</p> <ul style="list-style-type: none"> <li>• Air Conditioning (AC)</li> <li>• Hydraulic hose fittings</li> <li>• Brake hoses</li> <li>• Cable crimps</li> <li>• Pipe crimps</li> </ul> |
|---|---|

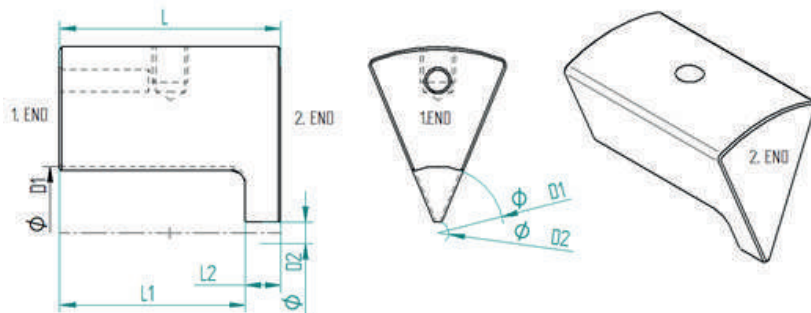
## SPECIAL CRIMPING APPLICATIONS

We also manufacture customer specific tooling to fit the individual needs of your application. Everything from modifying already working tool designs to creating totally new solutions for even the most demanding crimping challenges.

We provide customized dies machined and with industrial metal additive manufacturing (3D-printing).

- We can manufacture dies
- Without geometrical manufacturing limits
  - For the toughest use-cases
  - With fast development, test and delivery cycles

ASK FOR OUR QUICK DELIVERY OPTION!



# FOOT PEDALS



Standard foot pedal (single pedal) is available for all machines except P32NMS and P20NMS and service line machines.

Standard feature for FP160/165, FP170/175, KC800, KC1200, KC2000, SP100, SP350, SP1200, SP2000 and NC machines.

Electrical backstop and foot pedal share the same J2 connector. They cannot be used simultaneously. On ICC controlled machines AUX-mode is used for foot pedal and electrical backstop operation.

## SINGLE FOOT PEDAL CAN BE INSTALLED AS AN OPTION FOR

120ICC / FP120ICC

140ICC / FP140ICC

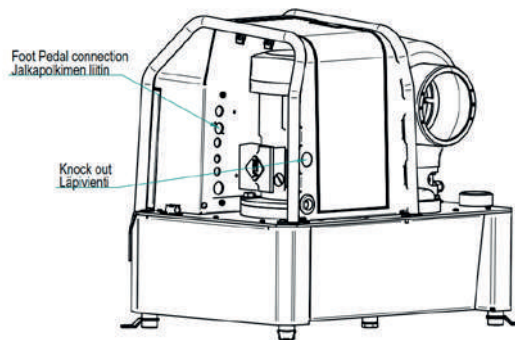
FP20ICC

FP145ICC

CC22 / 26

20MS / 32MS

P51 / P60



The foot pedal enables holding the hose assembly with both hands. In P32NMS and P20NMS machines foot pedal is double pedal

One pedal is for crimping and the other one for opening. When foot pedal is connected, dies will move as long as the foot pedal is pressed or till the set crimping diameter has been reached. Crimping can be interrupted by lifting the foot from the pedal. After reaching the crimping diameter dies are opened by using the other pedal.

In P32NMS and P20NMS machines double pedal is possible only as factory installation.

Foot pedal part numbers:  
676057 for 20MS and 32MS  
676906 for P20NMS and P32NMS  
691563 for all other machines

